



Accountability

Commitment

Excellence

Integrity

Service



U.S. Immigration
and Customs
Enforcement



***ICE Health Service Corps (IHSC)
is a component of ICE
Enforcement and Removal Operations (ERO).***

Mission

A female medical professional with dark hair, wearing a white lab coat over blue scrubs, is focused on examining a male patient. She is wearing purple nitrile gloves and using a black stethoscope to listen to the patient's back. The patient is wearing a red shirt and is seen from the back. The setting appears to be a clinical or hospital environment with medical equipment and a map on the wall in the background.

To provide the safe delivery of high-quality health care to those in ICE custody.

Vision



To be the best health care delivery system in detention and correctional health care.



CORE VALUES

Commitment

We are committed to providing quality, cost-effective health care in collaboration and partnership with both federal and non-federal partners.

Service

We strive to satisfy and meet the needs of the organization and stakeholders, in support of immigration law enforcement.

Integrity

We consistently conduct business and deliver goods and services openly, honestly, and to the best of our ability.

Accountability

We are responsible for our personal and organizational decisions, actions and results. We are good stewards of government funds and resources.

Excellence

We provide services and mission support through highly qualified health care professionals who work toward achieving optimal outcomes.

Who We Are



IHSC comprises a diverse workforce of more than 1,600 staff.



Staff include U.S. Public Health Service Commissioned Corps officers, federal civil servants, and contract health professionals.

IHSC Serves Alongside Partners

- In detention facilities to process and care for individuals in ICE custody.
- To provide medical support during ICE air operations and U.S. Coast Guard maritime interdiction missions.
- To support and advise field office leadership on medical issues.



What We Do



Within 12 Hours

Initial Health Screening

- Assess current health status
- Perform initial dental, vision, medical, and mental health screening
- Continue medication therapies
- Check for Infectious or communicable diseases
- Identify and address Immediate health needs
- Provide patient education

Within 14 Days



Comprehensive Health Assessment

- Complete physical exams
- Follow-up assessments for medication therapy
- Mental health screenings and referrals
- Dental screenings and problem-focused care

Occupations

Advanced Practice Providers

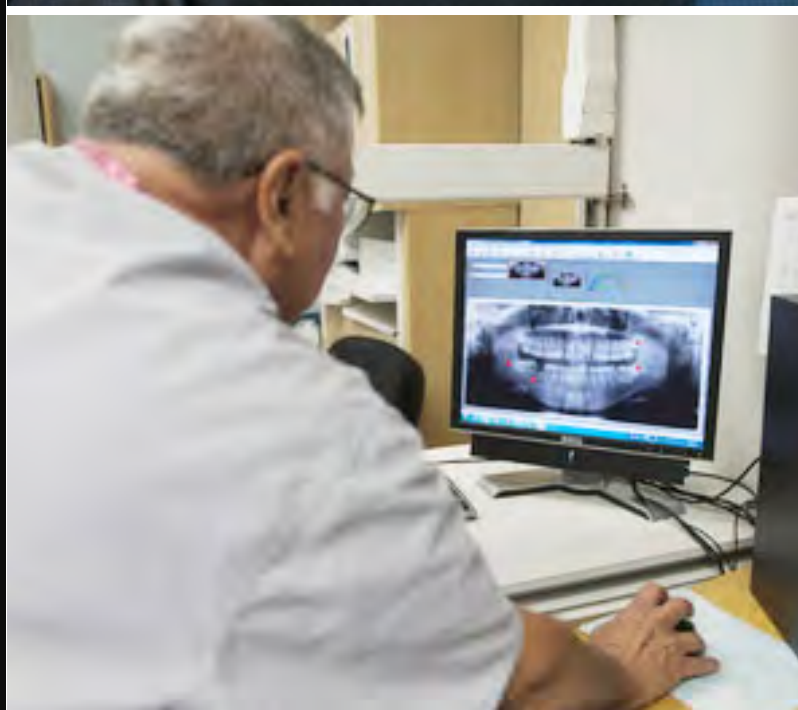
Certified Dental Assistants

Clinical Registered Nurses

Dentists

Dental Hygienist

Licensed Clinical Social Workers



Licensed Practical Nurses

Pharmacists

Physicians

Psychiatrists

Psychologists

Program Managers



ZEPEDA

ANDRADE

USPHS

IHSC-Staffed Facilities



Direct Health Care

INFIRMARY 6

**CUARTO DE
ENFERMERIA 6**

***IHSC is the only entity in ICE
responsible for providing
direct patient care.***



Health Care

Patient Services

Provided at IHSC-staffed facilities and contracted facilities throughout the nation.

Specialty-Care

Ensures detained noncitizens receive quality health care through off-site speciality and emergency care services.



Evidence-Based Treatment

Delivers improved health outcomes, highly qualified experts leverage evidence-based treatment.

Peer-Review

Diagnoses, treats, and maintains quality medical care for noncitizens, following peer-reviewed guidelines.

Patient Services

Intake Screenings

Physical Exams

Emergency Room

Dental Visits

Urgent Care

Pharmacy

Behavioral Health

Sick Calls



Behavioral Health Care

6 Step Process


1. Initial screening and referral
2. Integration into the system
3. Case management and treatment
4. Prevention measures
5. Release planning
6. Continuity of care



Benefits

- Improves noncitizens' well-being
- Decreases hospitalizations and overall length of stay
- Increases participation in legal processes and court hearings
- Ensures safety of the detained population

The Four Pillars of the ICE Health Care System

A man in a blue uniform is shown in profile, operating a pharmacy machine. He is holding a blue tray labeled 'METFORMIN' and a yellow pill bottle. The background is a blurred pharmacy setting with shelves of medicine.

Provide direct care to patients in IHSC-staffed facilities

Oversee compliance with health-related standards in non-IHSC-staffed facilities

Manage referrals for off-site treatment and reimburse medical claims

Provide medical support during ERO repatriation missions



Professional Standards

IHSC follows professional, peer-reviewed guidelines to diagnose, treat, and maintain high-quality health care for noncitizens.



Accreditation Standards

- 2016 Performance-Based National Detention Standards
- 2018 National Commission on Correctional Health Care
- 2020 ICE Family Residential Standards

IHSC Organization



Administration Division

Oversees administrative functions essential to supporting and sustaining the IHSC health care system.



Health Systems Support Division

Manages the daily operations of IHSC-staffed facilities and personnel to ensure ICE provides high-quality health care services to individuals in its custody.



Office of the Chief of Staff

Oversees key IHSC-wide functions related to external requests for information and taskings, investigations, communications, policy, and emergency preparedness.

Clinical Services Division

Delivered direct health care services in 19 IHSC-staffed facilities throughout the nation, providing care to over 131,000 noncitizens through more than 1.2 million encounters in FY23.



Health Care Compliance Division

Oversaw compliance with health-related standards for more than 191,850 noncitizens housed in 128 non-IHSC-staffed facilities. Focused on patient safety, risk management, and quality improvement. Manages off-site referrals and medical claims.

IHSC Supports Repatriation Efforts

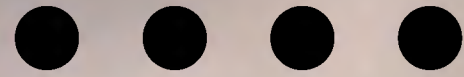
IHSC staff manage medical care of noncitizens in ICE custody while aboard repatriation flights.

IHSC staff assess noncitizens for their fitness to travel, monitor and address their medical needs while in transit, and coordinate with the country of origin for continuity of patient care.

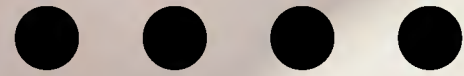




ICE Health Service Corps



*Providing the safe
delivery of high-quality
health care to those in
ICE custody.*



**For more
information,
visit us at:**

[www.ice.gov/
careers/ihsc](http://www.ice.gov/careers/ihsc)

